



# SEND CPD SESSIONS

Future Pathways and Careers

Thursday 6 October 2022  
Future Progression Pathways

THE CAREERS &  
ENTERPRISE  
COMPANY

 **DORSET**  
Local Enterprise Partnership



# Future Progression Pathways

*Jules Benton*

*Cosmic-futures@outlook.com*



# Options after statutory schooling

You can leave school on the last Friday in June if you'll be 16 by the end of the summer holidays.

You must then do one of the following until you're 18:

stay in full-time education

combine work and study

volunteer or work part-time and study

Young people aged 16 and 17, who have not attained level 3 qualifications are under a duty to continue in education or training until the young person's 18th birthday. The statutory duty does not extend until the end of the academic year in which the young person turns 18. Young people should however be encouraged to complete the education or training they are undertaking beyond their 18th birthday.

# Post-16

## School



Young people may move into the sixth form of their mainstream or special school or move to another school.

Staying in a school offers structure and familiarity and might help if they're not yet ready to move on to a different type of setting.

In school young people may do a programme of study leading to academic or vocational qualifications, from entry level to GCSEs, BTECs, T Levels and A levels.

# Post-16

## College

There are three main types of college:

- further education (FE) colleges,
- sixth form colleges and
- specialist further education colleges.

Courses for 16 – 19 year olds [and 19 – 25 year olds with an EHC Plan] are known as 'study programmes but sometimes they might be referred to as 'Foundation Learning', 'Inclusive Learning', 'Supported Learning' or 'Personalised' Programmes.

They may or may not include qualifications.

They will usually include at least one qualification, some work experience and some enrichment activities

Young people over 16 are not entitled to education across five days a week, and many college courses are part time, for example three days a week.

<https://natspec.org.uk/colleges/applying-for-a-place>

# Post-16

## **Individually-tailored education**

Education does not have to lead to qualifications or employment. It isn't necessary to be studying full time, be on an accredited course, or progressing towards formal qualifications.

And a young person can still have an EHC plan without these, as long as they are doing some form of education or training.

Education can include small steps in progress towards learning a particular skill such as communication.

This does not have to be at one provider. Education for young people can include a mixture of learning and other activities such as work experience, volunteering, independent travel training, managing money or communication and self- help skills.

Some young people are not able to access formal settings such as a college, and alternative provision may be appropriate.

The local authority might fund such provision for a young person with an EHC plan if they agree this is the only way to meet their special educational needs.

Getting an individual package in place can be challenging, and the local authority should provide support and advice, including advice about personal budgets if appropriate.

# Personal Budgets

A personal budget is an amount of money identified by the local authority (LA) to deliver the support set out in an education, health and care (EHC) plan.

<https://www.ipsea.org.uk/personal-budgets-and-direct-payments>

## **Different types of personal budgets**

### **A personal social care budget**

This is for children and young people assessed as needing extra support at home or in their community. The social care or early help team carry out the assessment. Most personal budgets are paid through direct payments.

### **A personal health budget**

This is money for children and young people assessed as needing continuing health care. These are children with complex, long-term or life-limiting conditions.

### **SEN (education) personal budget**

The SEN Personal Budget is a sum of money that can be used to personalise a child or young person's learning support and will help meet the outcomes in the EHC plan. This allows young people or their parents and carers to create flexible or specialised learning support.

# Post-16

## Supported Internships

Supported Internships are a structured study programme based primarily at an employer. They enable young people aged 16 to 24, with an EHCP, to achieve sustained paid employment. Supported Internships are unpaid and last a minimum of six months.



## What are Supported Internships?



A short guide for learners

[councilfordisabledchildren.org.uk/resources/all-resources/filter/inclusion-send/accessible-guide-supported-internships](https://councilfordisabledchildren.org.uk/resources/all-resources/filter/inclusion-send/accessible-guide-supported-internships)



# Post-16

## Traineeships

Traineeship programmes are designed to prepare young people, 16 to 24 years old, for their future careers by helping them to become "work ready".

To start a traineeship, you'll need to:

- be eligible to work in England
- have little or no work experience and be unemployed
- be aged 16 to 24, or 25 with an education, health and care (EHC) plan

Traineeships can last from 6 weeks up to 1 year, though most last for less than 6 months.

You can also use the [find a traineeship search tool on GOV.UK](#).

# Post-16

## Apprenticeships

An apprenticeship is a job with training and a qualification to aim for, you would earn a wage, develop your skills, update your CV and experience, and start on the career ladder.



[List of apprenticeship, traineeship and supported internship providers](#)

[Find an apprenticeship search tool on GOV.UK.](#)

[Becoming an apprentice information and national help desk contact details](#)

[Apprenticeships](#)

# Post-16

## Support and reasonable adjustments within Apprenticeships, Traineeships and Supported Internships

Providers receive Learning Support funding to pay for extra support that learners might need. They can also apply for Exceptional Learning Support if support costs exceed £19,000 in any one funding year.

[www.disabilityrightsuk.org/sites/default/files/civicrm/IntoApprenticeships\\_2020\\_04\\_LowRes\\_Bookmarked.pdf](http://www.disabilityrightsuk.org/sites/default/files/civicrm/IntoApprenticeships_2020_04_LowRes_Bookmarked.pdf)

- Apprentices with an EHC plan or 'legacy statement' can now apply for an adjustment to the minimum standards of English and Maths required to an Entry Level 3. The training provider must provide evidence that, even with support, reasonable adjustments and 'stepping stone' qualifications, the apprentice has not achieved the minimum level of English or maths because of their learning disability or difficulty.
- British Sign Language can be an alternative to English Functional Skills for Deaf people whose first language is BSL
- Access to Work can be used for Supported Internships, Traineeships and Apprenticeships



# Post-16

## Work or Volunteering

Between 16 and 18 you can work or volunteer for 20 hours or more if you combine it with part-time study or training.

You may also be able to combine lots of different types of activities, like a part-time college course to improve your English and maths, volunteering in a charity shop and getting skills to take care of yourself and travel independently.

And if young people need help after leaving school...

All Local Authorities have (or commission) a team to support 16 – 18 year olds Not in Employment Education or Training (NEETs)

[This support can also extend to older vulnerable young people]

<https://www.upinbcp.co.uk/explore/step-up>

<https://www.dorsetcouncil.gov.uk/education-employment-training-and-re-engagement-support-team>

# Post-18

## Work or Volunteering

The UCan Project is for people in the Dorset area, aged 18 and over who are not in paid employment.



'We will actively work with employers to ensure they understand your specific requirements to help you find and keep the right role for you.'

Education and Training: If you are looking to strengthen your skills, start a training course or gain a qualification, together we can identify and access the right course for you.

Digital Skills: Our qualified in house Tutors are here to help.'

<https://wiseability.co.uk/building-better-opportunities>

# Post-18

## Work or Volunteering

There is also a legal duty under the **Care Act** to facilitate employment and volunteering opportunities to people with disabilities, and other vulnerable adults.

Ask a social worker for more information.

Dorset council has awarded a three-year contract to Pluss from this spring. The assistance ranges from CV creation and work experience to practical help like navigating public transport.

<https://pluss.org.uk/work/services/learning-disability-services-employment/>

In BCP COAST supports individuals who have a long term health condition or a disability to gain and/or sustain work.

<https://www.fid.bcpccouncil.gov.uk/kb5/poole/fis/service.page?id=Fltv9HQBZlc>



# Post-18

**Community-based day activities  
and support for people with  
learning disabilities**

**Will be covered in sessions 4 and 5**

<https://www.bcpccouncil.gov.uk/Adult-social-care-and-health/Applying-and-paying-for-care-and-support/Care-and-support-directory.aspx>

<https://adultsocialcare.dorsetcouncil.gov.uk/contact-us/adult-social-care-community-directory/>



# Post-16/18

## Work or Volunteering



Your local Jobcentre can help you find a job or gain new skills and tell you about disability-friendly employers in your area.

They can also refer you to a specialist work psychologist, if appropriate, or carry out an 'employment assessment', asking you about:

- your skills and experience
- what kind of roles you're interested in

Ask the work coach at [your local Jobcentre](#).

The support on offer through the DWP will be covered in session 3





# Post-16/18

**Examples of National organisations offering work opportunities:**

## **Evenbreak**

<https://www.evenbreak.co.uk/en>

## **Ambitious about Autism**

<https://www.ambitiousaboutautism.org.uk/what-we-do/employment/paid-work-experience>

## **Diversity Jobs**

<https://diversityjobsgroup.com>



# Post-16

## Self Employment and Enterprise

Self-employment and small business ownership is becoming an increasingly popular route to work for people with disabilities who want to use their skills and talents to create employment. It can offer you the chance to create a job and a way of working that fits with your individual health needs and personal preferences.

<https://www.dorsetcommunityaction.org.uk/inspire-dorset-bbo/>

<https://independentandworkready.co.uk/>

<https://samee.co.uk/>

<https://www.rapid-enterprise.co.uk/>

<https://www.princes-trust.org.uk/help-for-young-people/programmes#start-your-business>

# Post-16

## A Levels

You usually study A levels over 2 years. Most students choose 3 subjects to study but you can take more or fewer.

You can even study for a BTEC or other qualification at the same time.

**Grades you need to take A levels:**

**You should check with the school or college where you'd like to study to find out exactly what you'll need.**

**You normally need at least:**

- **5 GCSEs at grades 9 to 4**
- **grade 6 in the subjects you want to study**

**Subjects you can take at A level:**

**There are more than 40 different A level subjects to choose from.**

[Click here to find an A level course](#)

# Post-16

## Vocational technical qualifications (VTQs)

VTQs focus on a specific job or a broad employment area, such as childcare, engineering or IT. They're usually taken at a school or college.

### Types of VTQs

There are a few different types and levels of VTQs, including:

- [BTECs](#): level 1 to 7 qualifications
- [Cambridge Nationals](#): level 1 and 2 qualifications
- [Cambridge Technicals](#): level 2 and 3 qualifications
- [T Levels](#): level 3 qualifications (more info on next slide)

You can see [what the different qualification levels mean](#) on GOV.UK.

The length of the VTQ will be different for each one, but the minimum length is one year.

.

# Post-16

## T Levels

80% of your time in the classroom and 20% on a minimum 9-week placement with an employer.



[T Levels](#)

## Grades you need to take a T Level

Schools and colleges set their own entry requirements, so check their websites to find out what GCSE grades you need.

## Subjects you can take

There are several [subjects available now](#) in England, including digital, science, construction and health. More subjects are coming in September 2023 and in the next few years.

Eventually, there will be something for everyone, from agriculture to catering and hairdressing to legal services.

## After your T Level

A T Level is worth the same [UCAS points](#) as 3 A levels.

# Post-16

## Higher Education

Courses are usually taught in universities, colleges or specialist institutions like art schools.

CLICK  
HERE

[Higher Education](#)

Some students may go to university or into another type of higher education earlier than 18 years old.

You can often study flexibly at your own pace by learning online or part-time. **Types of qualifications**

There are many different types of higher education qualifications, such as:

- diplomas
- bachelor degrees
- foundation degrees and foundation years
- [HTQs](#)
- degree level [apprenticeships](#)

If you're struggling to decide which qualification to take, you may want to [speak to a careers advisor](#).

<https://www.disabilityrightsuk.org/how-we-can-help/benefits-information/factsheets/education-factsheets>

# Support



There is more information about the support available in different learning and work environments in session 3



Exploring Options



# Information and Advice

## Who is National Careers Service for?

### Citizens

We provide anyone aged 13+ with life long careers information, advice and guidance to help you make good career choices, no matter what point of your career journey you're at.

### Intermediaries

We provide information for parents, teachers, employers, coaches and advisers to support others in their career journey.

### Stakeholders

We work with organisations, employers and professional bodies to promote the importance of up to date careers guidance.

---

## Careers information and advice online

The National Careers Service website is here to give you the tools to make decisions about your career at your own pace and in your own time. You can:

- [explore careers](#) to see what career options are out there
- read [careers advice articles](#) for help to make good career decisions
- take a [skills assessment](#) to find out what you're good at
- [find a course](#) that will provide you with the training and qualifications you need
- [update your skills](#) to help you do your job more effectively or support you in finding a new one

[www.nationalcareers.service.gov.uk](http://www.nationalcareers.service.gov.uk)



Some Advisers may be qualified to level 6/7 but the requirement for NCS advisers is only Level 4

# Advice or Guidance?

## Careers advice

- can involve things like signposting to information about learning and work opportunities and expressing an opinion about options

## Careers guidance (called 1:1 Personal Guidance in Gatsby Benchmarks)

- is more in-depth and enables the adviser to explore interests, skills, aptitudes, and attitudes used in career planning/management

Career management is not about making the right occupational choice  
...its about equipping people with the competencies to make the myriad  
choices with which adults are confronted continuously, lifelong'

*Talent ... Opportunity. Prosperity requires connecting the Dots. Jarvis, P.*

[www.thecdi.net/write/Documents/CDI\\_The\\_differences\\_between\\_career\\_information\\_and\\_guidance.pdf](http://www.thecdi.net/write/Documents/CDI_The_differences_between_career_information_and_guidance.pdf)

Directive

Non-directive

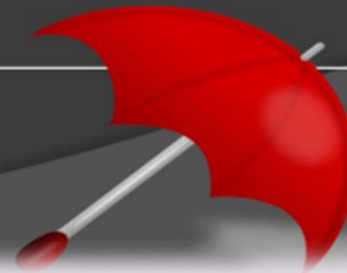
Tell	Instruct	Give advice	Suggest	Give feedback	Ask questions to raise awareness	Summarise	Paraphrase	Reflect	Listen
------	----------	-------------	---------	---------------	----------------------------------	-----------	------------	---------	--------

Advice and information

Coaching

Counselling

Guidance



There is good evidence which demonstrates the impact of personal guidance.

This evidence is able to draw on a number of randomised control trials, longitudinal studies and meta-analyses. It is associated with a range of short and long-term impacts on an individual's:

- personal effectiveness e.g. self-awareness and self-esteem
- career readiness e.g. career planning and decision making
- educational outcomes e.g. improved attendance and attainment

# Personal Guidance

[HTTPS://RESOURCES.CAREERSANDENTERPRISE.CO.UK/SITES/DEFAULT/FILES/2021-09/WHAT-WORKS-PERSONAL-GUIDANCE.PDF](https://resources.careersandenterprise.co.uk/sites/default/files/2021-09/what-works-personal-guidance.pdf)

# Prepare your students and their circles of support

## Information, Advice and Guidance

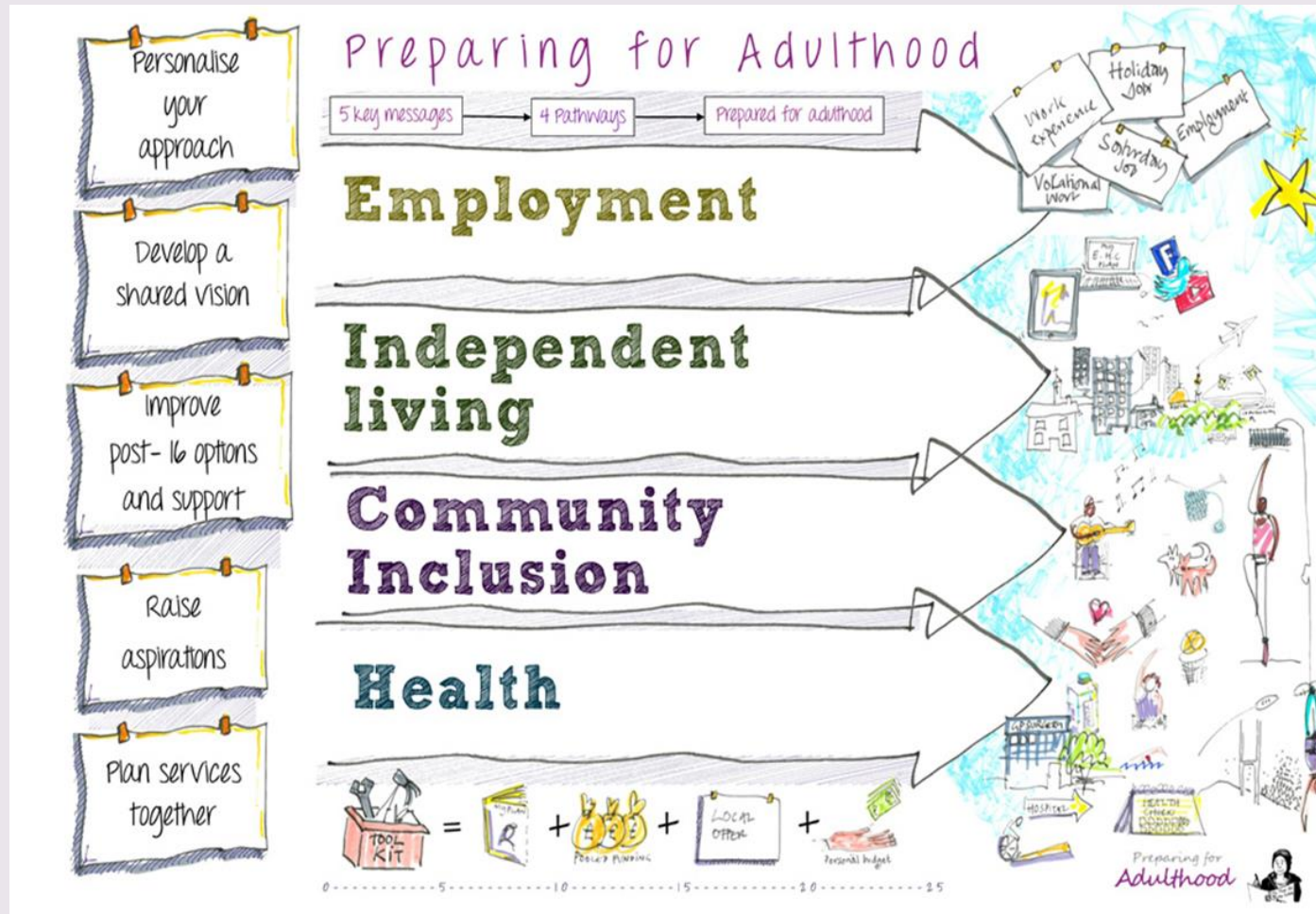
Make sure people understand the difference



- ✓ Put it on your website
- ✓ Explain during careers education
- ✓ Display it at parent/carer events
- ✓ Include this in staff training
- ✓ Provide an introduction to your careers adviser which explains their role...and signposts to sources of information and advice

[http://www.thecdi.net/write/Documents/CDI\\_The\\_differences\\_between\\_career\\_information\\_and\\_guidance.pdf](http://www.thecdi.net/write/Documents/CDI_The_differences_between_career_information_and_guidance.pdf)

# Prepare your students and their circles of support



# Options with an Education Health and Care (EHC) plan

16 to 18 year olds with an Education Health and Care (EHC) plan should think about their options.

- [Preparing for what happens in year 11](#)
- [During year 11](#)
- [Your options at 16](#)
- [Support you can get in education and training](#)
- [Support you can get at work](#)
- [Other options](#)

---

## Preparing for what happens in year 11

Your year 10 [Annual Review](#) will help you to start thinking about your next steps after year 11.

You will have to stay in education or training until you are 18. Young people with special educational needs can continue to get free education and training up to the age of 25.

If you have special educational needs and do not have an EHC plan, you request an assessment through your [local council's special education and disabilities service](#).

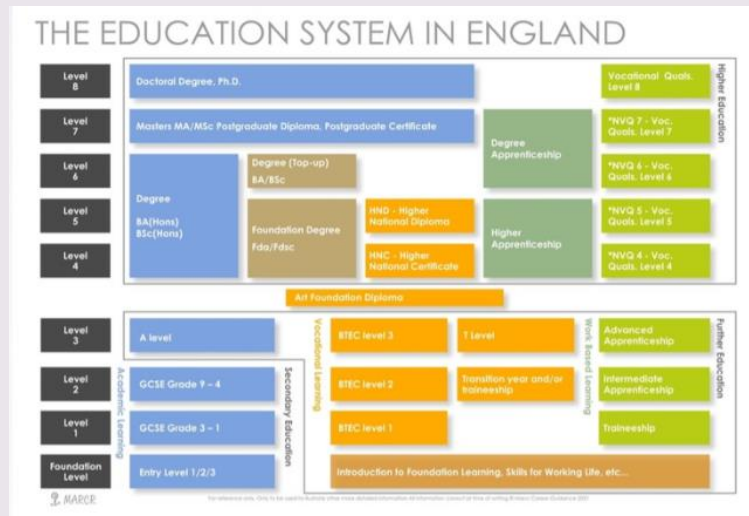
---

## During year 11

## National Careers Service

<https://nationalcareers.service.gov.uk/careers-advice/options-with-education-health-and-care-plan>

# Qualification levels in England



[www.redbubble.com/i/poster/English-Education-System-by-marcr-careers/93376920.LVTDI](http://www.redbubble.com/i/poster/English-Education-System-by-marcr-careers/93376920.LVTDI)

<https://www.gov.uk/what-different-qualification-levels-mean/list-of-qualification-levels>



# Resources

- <https://www.dorsetcareershub.co.uk/>
- <https://www.ndti.org.uk/resources/preparing-for-adulthood-all-tools-resources>
- <https://resources.careersandenterprise.co.uk/for/send>
- <https://www.togethermatters.org.uk/resources-and-information>
- DPCCC Transitions Guide and Web Portal ...coming soon

# SEND Local Offer

<https://www.bcpfamilyinformationdirectory.com/kb5/poole/fis/localoffer.page>

The screenshot shows the BCP Council Family Information Directory and SEND Local Offer website. The header includes the BCP Council logo, navigation links for Google Translate, Accessibility, Contact Us, and My Account, and a search bar with fields for Keyword, Postcode or Placename, and a SEARCH button. The main content area is titled "Information for families in Bournemouth, Christchurch and Poole" and includes a "Favourites" button. The breadcrumb trail reads: "You are here Home > Local Offer > Schools, Colleges and Training for children and young people with SEND". The main heading is "SEND special educational needs and disability" with a play button icon. Below this is a "View all results" button and a "Search within..." section with buttons for Schools, Transition Planning, Assessment, Information, Advice and Support, Out of School Activities, and Local Offer Home. The main text describes the section's purpose: "Use this section to find information on schools, colleges and training for children and young people with special educational needs and disabilities (SEND). Details of support available for those with SEND, can be found in the providers directory record in the Local Offer SEND tab." It includes links for "Find details of schools, including special schools in Bournemouth, Christchurch and Poole", "Find details of Further and Higher Education providers in the local area", "Find details of supported internship, traineeship and apprenticeship providers", and "If you are worried about your child's learning find out more about support here." There are also links to "Visit the Family Information Directory for more information about schools and learning" and "Find information about learning and training for young people aged 14 plus in the Preparing for Adulthood section." On the right side, there are three sections: "Related Information" with links to "Section 41 independent special schools and colleges", "Alternative Provision", "SEND special provision", and "Creating additional local specialist education provision"; "Website Links" with links to "Parent Carers Together" and "SENDclass4BCP"; and "Helpful Publications" with a link to "Supporting pupils with autism in mainstream schools".

The screenshot shows the Dorset Council's SEND Local Offer website. The header features a colorful illustration of children and families, including a child with a kite, a man with a laptop, a woman with a child in a wheelchair, a child on a bicycle, a woman with a child, a child with a soccer ball, and a child playing a guitar. The text "SEND Dorset local offer" is prominently displayed. Below the illustration, the breadcrumb trail reads: "Home > Children and families > Dorset's Local Offer". The main heading is "Dorset Council's SEND Local Offer". The main text states: "Dorset Council's Local Offer for children and young people from 0 to 25 years with special educational needs and disabilities (SEND) provides information, advice and support for children and their families."

<https://www.dorsetcouncil.gov.uk/children-families/sen-and-disability-local-offer/dorsets-local-offer>

[www.cosmic-cactus.com](http://www.cosmic-cactus.com)

*Your future is our business!*

*Cosmic Cactus is a company  
limited by guarantee*

*Company number 13754128*

**JULES BENTON**

**TALKTOJULES@OUTLOOK.COM**

**07749 627012**





# SEND CPD SESSIONS

## Future Pathways and Careers

These workshops aim to equip SLT, teachers and all support staff from SEND and AP schools to embed 'preparing for adulthood', careers and future pathways in all areas of school life.

Join us for a series of free online training sessions designed and delivered by Cosmic Cactus, experts in information and guidance for young people with SEND.

**All sessions will be delivered virtually between 15:45 and 17:15**

Attendees are welcome to register for the whole programme or individual sessions.

**Thursday 22 September 2022**  
**Voice and Choice for Next Steps**

Exploring how to make plans, consider choices and have a voice including mental capacity, EHCP outcomes and preparing to leave school.

**Thursday 6 October 2022**  
**Future Progression Pathways**

Understanding the range of post-16 and post-19 options.

**Thursday 20 October 2022**  
**Navigating the Landscape**

Considering the support available within education, employment and work-related learning, including funding, provision and services.

**Thursday 10 November 2022**  
**Community Inclusion**

Exploring health, lifestyle, leisure activities and friendships to encourage accessing support in the community.

**Thursday 24 November 2022**  
**Developing Independence**

Including housing and supported & independent living.

**Thursday 8 December 2022**  
**Policy and Legislation**

Examining available resources including CEIAG, Gatsby Benchmarks, Ofsted, SENDIASS and the Care Act.

To register visit [bit.ly/3QAhRv3](https://bit.ly/3QAhRv3) or scan

